

The DEBO Step®

Installation Instructions for DEBO Step **Model 10321**
Fits 2011-12 Chevy 2500/3500, with Factory Hitch



DEBO Step Installed, Stowed Position

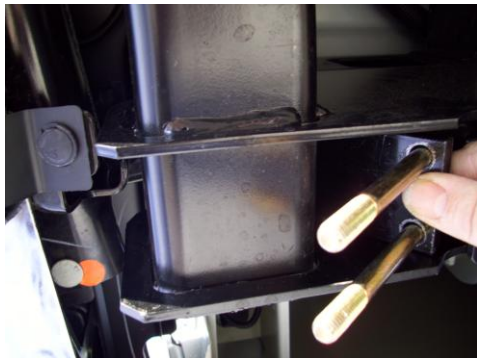


DEBO Step Extended for use with tailgate down.

Tools required for Installation: 9/16" wrench, a friend or family member

Tools required for Assembly: 2 7/16" open ended or box wrenches

Parts List: (1) DEBO Step, (1) Installation Instruction Sheet, (1) Assembly Instruction Sheet, (1) Clamp Plate, (4) 3/8"x4 1/4" hex bolts, (4) 3/8" hex nuts, (4) serrated tooth lock washers



Step 1. The DEBO Step mounts on the driver side of the truck, clamping on the 3" square hitch frame bar. Insert 2 bolts in the clamp plate, and then insert it over the bar as shown at left. Make sure the 'u' cut notch is facing the rear of the vehicle,.

'U' cut notch goes towards rear of vehicle

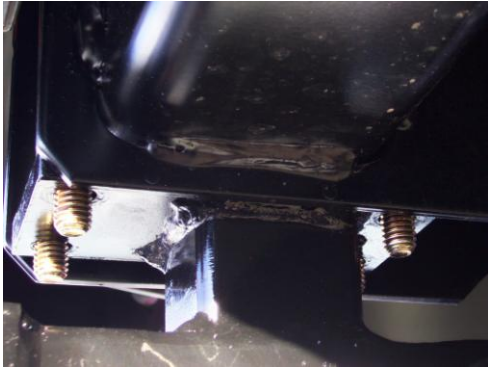


Insert bolts in these two holes



Step 2. Installing the other two bolts in the top plate will require tilting and maneuvering the top plate. Install the bolt toward the fender first, then install the bolt towards the spare tire.

Use the picture at the left as a reference.



Step 3. Remove the step bar from the slide guide per the assembly instruction sheet. Place the slide guide on the bolts and a serrated washer and nut on the bolts. Snug all nuts evenly to ensure the top plate of the slide guide and the clamp plate lay flat on the cross bar.

DO NOT TIGHTEN NUTS ALL THE WAY! WAIT UNTIL STEP 6!



Step 4. Using the assembly instructions, insert the step bar through the slide guide and replace the rear bolt and nut.

**Do not over tighten the pivot bolt nut! It can affect how the latch works.*

Step 5. Align the DEBO Step assembly with the frame of the truck. Rotate as needed, so the step bar is in line with the truck frame.

Step 6. Tighten all 4 nuts evenly and securely!

Your DEBO Step is ready for use!

NOTE: Your DEBO Step will be at a slight angle downward when fully extended due to the clearance between the step bar and the slide guide end plates. This design feature is what makes The DEBO Step® self locating!

Use your DEBO Step in any position. The step bar rotates slightly until it contacts the slide bracket at the points of contact. These "**contact pressure points**" resulting from the slight angle are what keeps the step from sliding when in use in any position. Remember this feature when operating your DEBO Step.

TO OPERATE: Using one hand, at the same time, lift the latch knob "up" with the fingers to unlatch and hold, push "down" lightly with the thumb on the step pad to align the step bar with the slide bracket, and "pull" out to any desired position. Pull out part way for use with the tailgate up. Pull out to the fully extended position for use with the tailgate down. For best results, use your DEBO Step frequently.

To store, simply slide the step in. No need to touch the latch knob. Just push in until the latch engages, as simple as closing a door! Remember, the secret to moving the step bar *freely* is to release the "**contact pressure points**" by aligning the step bar with the slide bracket.

It's really quite easy. After just a couple of tries, you will find:

It's as simple as closing a door!

DO NOT EXCEED! Weight limit 400 pounds

THANK YOU for using our product. Tell your friends to get one too!

The DEBO Step® team

For help or comments call the 24/7 Hotline: (608) 577-4002

Made in USA by: STATZ Corporation, 2034 Main St., Cross Plains, WI 53528

The DEBO Step®


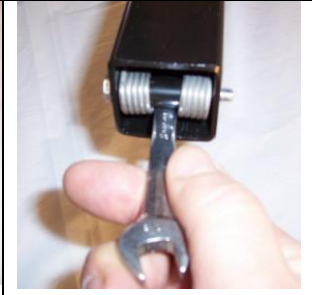


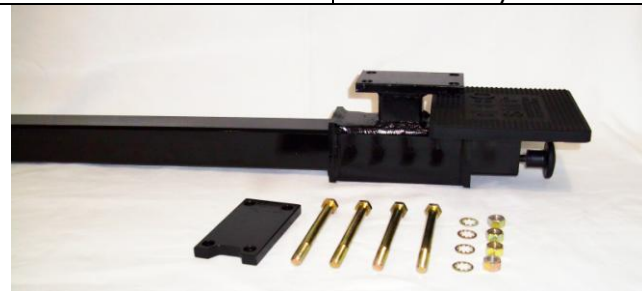
Assembly Instructions for DEBO Step Model 10321

Fits 2011-12 Chevy/GMC 2500/3500, With Factory Hitch or Equivalent.

Tools required for Assembly: (2) 7/16" box or open-ended wrenches

Your DEBO Step is shipped with the slide guide mounting bracket and step bar assembled. For easier installation of the mounting bracket on your truck, remove the step bar as shown below.

For Steps 3 & 4:

			
<p>A) Remove the hex nylock nut from the latch pivot bolt using a 7/16" wrench, and a suitable tool to hold the hex bolt head.</p> <p>Note: The ¼" hex nut is self locking design.</p>	<p>B) Insert the 7/16" wrench under the pivot tube as shown, lift to relieve spring force on pivot bolt, and remove the bolt.</p> <p>Remove cable tie, unlatch and slide the bracket off.</p> <p>NOTE: Leave the wrench in place until re-assembly!!!!</p>	<p>C) After the slide guide is installed on the truck, insert the step bar through the slide guide as shown.</p>	<p>D) Slide the step bar half-way through the guide/mounting bracket.</p> <p>E) Re-install the pivot bolt and nut in reverse per Steps B) and A).</p>
		<p>F) Go back to step 5.</p>	

DO NOT EXCEED! Weight limit 400 pounds.

THANK YOU for using our product. Tell your friends to get one too!
The DEBO Step® team.

For help or comments call the 24/7 Hotline: (608) 577-4002

Made in USA by: STATZ Corporation, 2034 Main Street, Cross Plains, WI 53528