

# The DEBO Step®

## Installation Instructions for DEBO Step **Model 10101**

Fits 99-12 Chevy/GMC 1500 Short & Long Beds, With Factory Hitch or Equivalent



DEBO Step Installed, Stowed Position

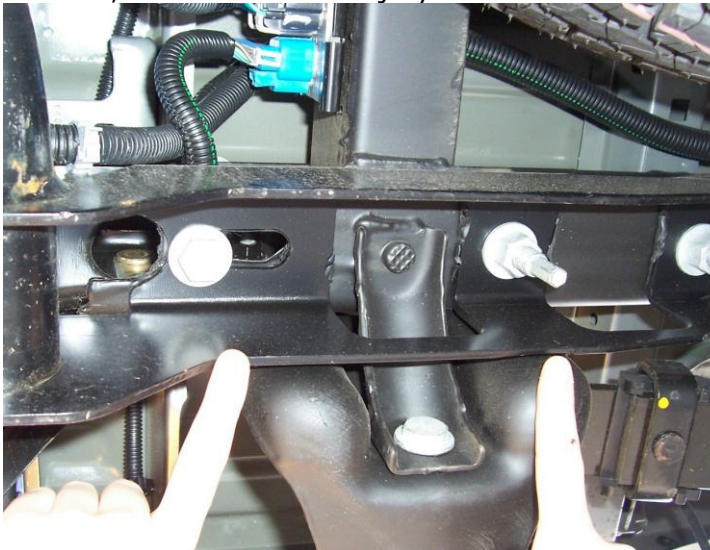


DEBO Step Extended for use with tailgate down.

**Tools** required for Installation: 1) Deep well socket, 21mm (13/16"), short extension, and handle, ratchet helpful. (use for Step 1) 2) Box or open end wrench, 21mm (13/16"). (use for Steps 1, 2 & 3) 3) Regular socket, 21mm (13/16"), short extension, u-joint, and handle. (use for Steps 2 & 3)

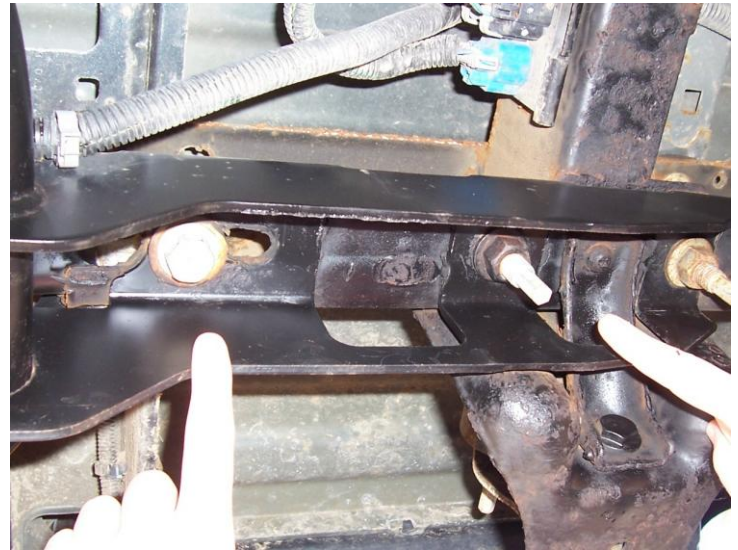
**Parts List:** (1) DEBO Step, (1) Instruction Sheet

**FOR YOUR SAFETY!** The mounting bracket slide is wire tied to the step bar. DO NOT Remove the wire tie until your step is mounted to the vehicle, SEE Step 5. If unlatched, the bracket is free to move, and could cause injury.



Short Beds

(Note position of vehicle spring bracket)



8' Long Bed

**Step 1.** The DEBO Step mounts on the driver side of the truck, using two of the existing M14 hitch frame mounting bolts as shown above.

Under your truck, remove the rear most bolt nearest the bumper (nut is welded on top of frame). Remove the second nut & bolt as shown in views above. DO NOT Loosen the third nut (toward the front of the vehicle). Note: the bolts and nut are locking designs, so wrenching will be needed all the way to remove and re-install.

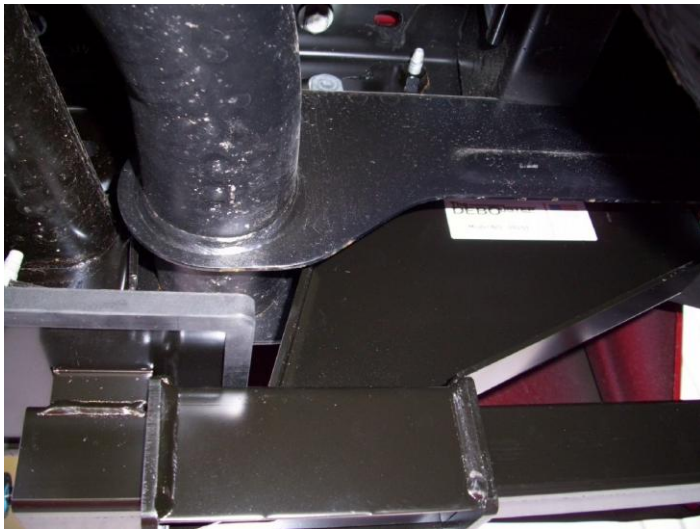


**Step 2.** Position your DEBO Step in line with the rear most bolt position. Re-install the rear most bolt all the way, but do not tighten at this time.

**Step 3.** Re-install the second bolt. Install bolt from bottom up and install the nut on top of the frame. U-joint and socket is helpful to install & tighten bolts. (See picture at left)

**Step 4.** Tighten both bolts securely! On 07-11 New Body, use u-joint and socket from bottom, use wrench on top of frame for second bolt.

**Step 5.** Remove the wire tie. **Your DEBO Step is ready for use.**



**Note:** Your DEBO Step will be at a slight angle downward when fully extended, due to the clearance between the step bar and the slide guide end plates. This design feature is what makes The DEBO Step® self locating!!

**Use your DEBO Step in any position!** The step bar rotates slightly until it contacts the slide bracket at the points of contact. These "**contact pressure points**" resulting from the slight angle are what keeps the step from sliding when in use in any position. Remember this feature when operating your DEBO Step.

**TO OPERATE:** Using one hand, at the same time, lift the latch knob "up" with the fingers to unlatch and hold, push "down" lightly with the thumb on the step pad to align the step bar with the slide bracket, and "pull" out to any desired position. Pull out part way for use with the tailgate up. Pull out to the fully extended position for use with the tailgate down.

To store, simply slide the step in. No need to touch the latch knob. Just push in until the latch engages. Remember, the secret to moving the step bar *freely* is to release the "**contact pressure points**" by aligning the step bar with the slide bracket.

It's really quite easy. After just a couple of tries, you will find:

**It's as simple as closing a door!**

**DO NOT EXCEED! Weight limit 400 pounds**

**THANK YOU for using our product. Tell your friends to get one too!**

**The DEBO Step® team**

**For help or comments call the 24/7 Hotline: (608) 577-4002**

**Made in USA by: STATZ Corporation, 2034 Main St., Cross Plains, WI 53528**